

# Bench Fixtures and Accessories



Bench Fixtures can be used with any of our power units and works with hand marking as well as semiautomatic.

There are two types:

- Roll Marking
- Part Locating



# Roll Marking

Used for marking on the outside diameter of cylindrical parts by rolling part over the stencil located for the bench marker.

Typically used to mark tubes or shanks by rolling them across the inverted stencil with a hand ground. The stencil is placed on the pad that uses a wicking action from an electrolytic reservoir to provide an electrolyte feed.

Part Number	Description	Details
B-1220	Bench Fixture - 1 ½ x 2	Assembly includes Monode Top Plate, 1 Monodepad and ORing
B-2045	Bench Fixture - 2 x 4 ½	Assembly includes Monode Top Plate, 1 Monodepad and ORing

# Part Locating

It can also be utilized for positioning or repeating the legend in the same location.

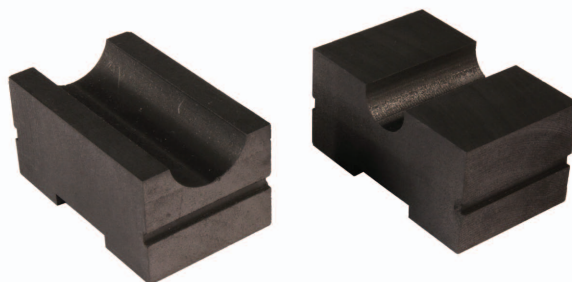
The bench marker uses a nonconductive top piece machined to locate the piece part over the stencil.

Part Number	Description	Details
B-1220L	Bench Fixture - 1 ½ x 2	Assembly includes Locating Assembly (B-1220-9), Monode Top Plate, 1 Monodepad and ORing
B-2045L	Bench Fixture - 2 x 4 ½	Assembly includes Locating Assembly (B-2045-9), Monode Top Plate, 1 Monodepad and ORing

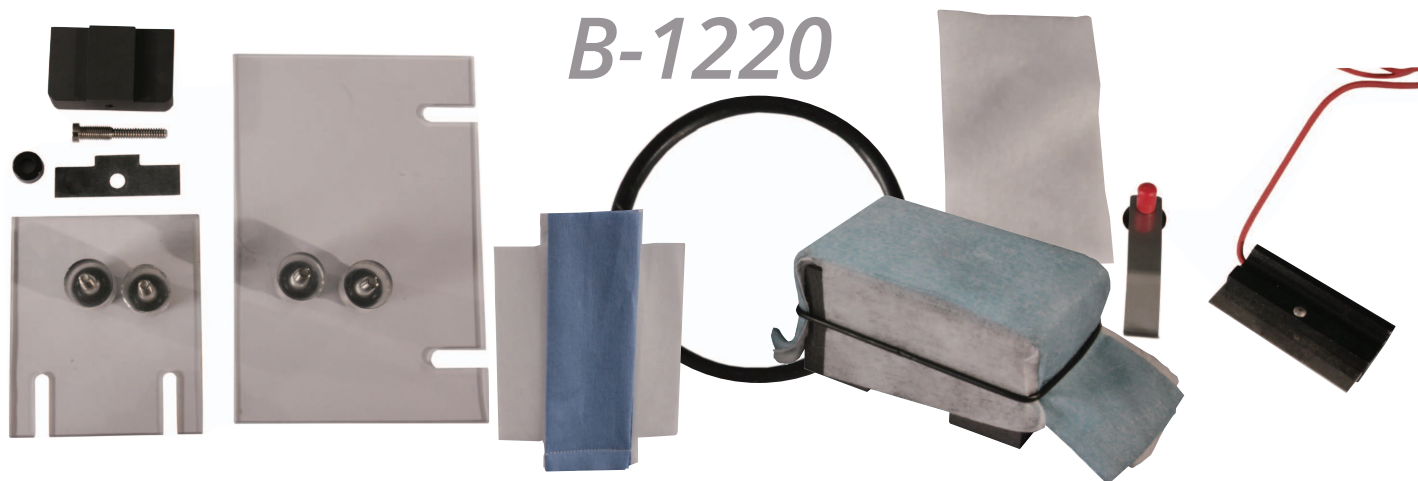
# Standard Parts Available for Purchase- B-1220

\*Convex and Special Contoured Top Plates Available.(Send drawing or part)

Part Number	Description	Details
B-1220-1	Top Plates for B1220 Fixture	1¼" x 2" x ½" Flat
B-1220-R	Top Plates for B1220 Fixture	1¼" x 2" x 1" High
B-1220-1RA	1¼" x 2" Contoured Top Plates	For diameters of 1/8" to 1/4"
B-1220-1RB	1¼" x 2" Contoured Top Plates	For diameters of 5/16" to 1/2"
B12201-RC	1¼" x 2" Contoured Top Plate	For diameters of 9/16" to 3/4"
B12201-RD	1¼" x 2" Contoured Top Plates	For diameters of 13/16" to 1"



# Standard Parts Available for Purchase- B-1220



Part Number	Description	Details
B1220-3	Monodepads 5 pack	B12201 top plate option
B1220-3R	Monodepads 5 pack	B12201R top plate option
B1220-6	Stencil Cleaning Heads (HM50150 & H100 Holder)	Clean stencils while on bench fixtures. Connects with yellow terminal on power unit. Complete with Monode Holder H-100.
B1220-7	Stencil Cleaning Head Pads (DE50150 pkg. of 10)	B1220 Fixture Option
B1220-8	Plastic Locating Plate Blank 2 1/2" x 3"	B1220 Fixture Option
B1220-9	Plastic Locating Plate Blank Assembly with riser blocks	B1220 Fixture Option
B1220-11	Absorbent Wick 3 1/4" x 2"	B1220 Fixture Option
Well Plate Assembly	Well Plate Assembly	Assembly includes carbon block, rubber gaskets and s.s. receptacle bolt (For B1220 & B2045 Fixtures) Can be purchased separately
HG	Hand Ground	Assembly includes cord and banana plug. (For B1220 & B2045 Fixtures)
Oring3	#3 O Rings	B1220 Fixture Option
Ground Strap	Ground Strap	B1220 Fixture Option

# Standard Parts Available for Purchase- B-2045

\*Convex and Special Contoured Top Plates Available.(Send drawing or part)

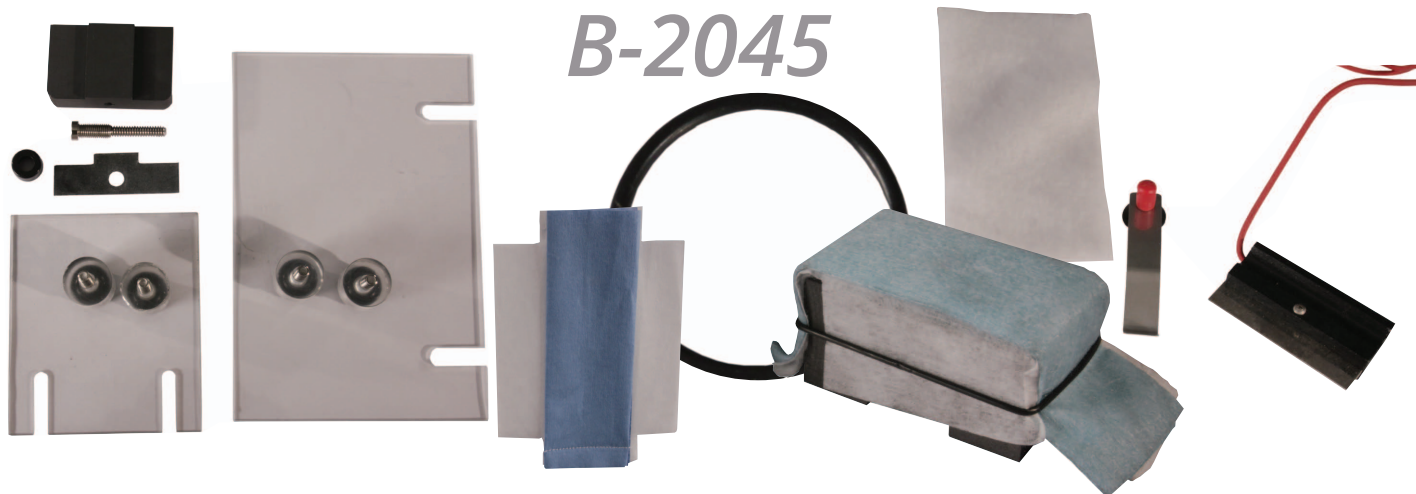
Part Number	Description	Details
B2045-1	Top Plates for B-2045 Fixture	2" x 4 1/2" x 1/2" Flat
B2045-1R	Special 2" x 4 1/2" Top Plates	1" High flat riser blank
B2045-1RA	2" x 4 1/2" Contoured Top Plates	For diameters of 1/8" to 1/4"
B2045-RB	2" x 4 1/2" Contoured Top Plates	For diameters of 5/16" to 1/2"
B2045-RC	2" x 4 1/2" Contoured Top Plates	For diameters of 9/16" to 3/4"
B2045-RD	2" x 4 1/2" Contoured Top Plates	For diameters of 13/16" to 1"





# Standard Parts Available for Purchase-

## B-2045



Part Number	Description	Details
B2045-3	Monodepads 5 pack	B-2045-1 top plate option
B2045-3R	Monodepads 5 pack	B-2045-1R top plate option
B2045-6	Stencil Cleaning Heads (HM50150 & H100 Holder)	Clean stencils while on bench fixtures. Connects with yellow terminal on power unit. Complete with Monode Holder H-100.
B2045-7	Stencil Cleaning Head Pads (pkg. of 10)	B-2045 Fixture Option
B2045-8	Plastic Locating Plate Blank 4" x 6"	B-2045 Fixture Option
B2045-9	Plastic Locating Plate Blank Assembly with riser blocks	B-2045 Fixture Option
B2045-11	Absorbent Wick 4" x 4 1/2"	B-2045 Fixture Option
Oring5	#5 O Rings	B-2045 Fixture Option
Ground Strap	Ground Strap	B-2045 Fixture Option
Well Plate Assembly	Well Plate Assembly	Assembly includes carbon block, rubber gaskets and s.s. receptacle bolt (For B1220 & B2045 Fixtures) Can be purchased separately
HG	Hand Ground	Assembly includes cord and banana plug. (For B1220 & B2045 Fixtures)