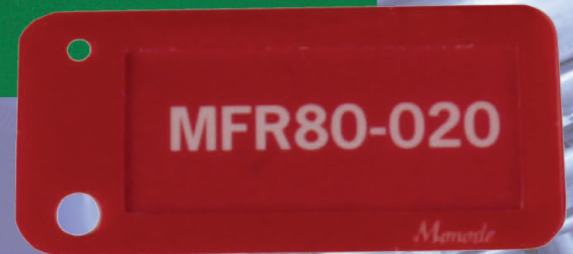
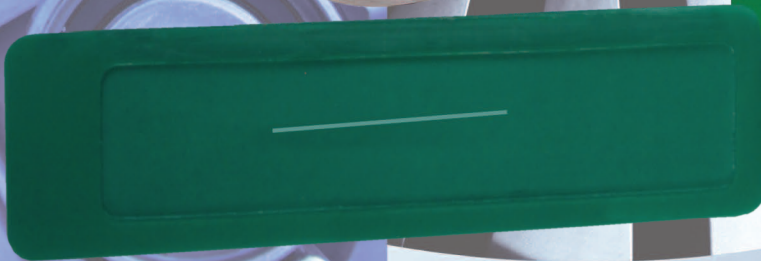


Photosensitive Stencils



15-02

15-02



Permanent Custom Stencils

Provide a stencil medium that can last up to thousands of marks.

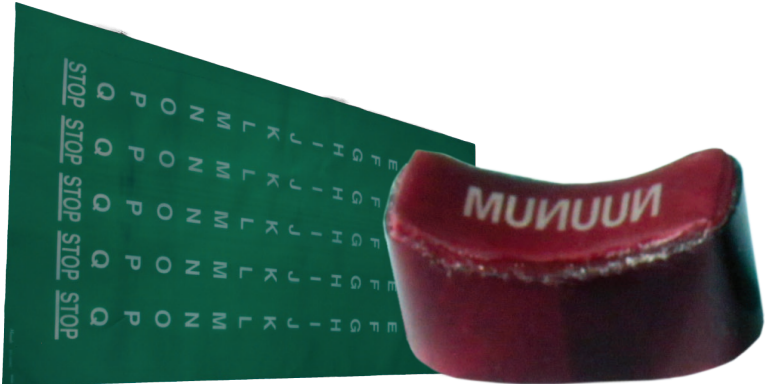
Applications Include:

- Component Identification • Component Traceability • Serial Numbering • Logo Marking
- Security Marking • Health & Safety Appliance Marking • Certification Marking
- Decorative Trophy & Award Marking • Time & Date Marking • Part Numbering
- Batch & Shift Coding • Calibration Systems • Label & Tag Marking



Dura-fab (DF)

- Constructed on a synthetic woven fiber base
- Recommended only for stencil designs with characters 3/36" or larger



Dura-fab Deep Etch (DFDE)

- The toughest of all electrolytic stencils
- Deep etch version of the DF line should be used when exact measurement or registration is needed
- This is the most commonly employed stencil for deep etch applications
- Can be used for general applications as well



Dura-fab Fine (DFF)

- Same as the DF stencil but with a finer, closer weave of synthetic woven fiber base
- Ideal for fine lines or detailed art work
- Can handle line weight as low as 0.005"



Dura-fab Fine Deep Etch (DFFDE)

- Deep etch version of the DFF line should be used when exact measurement or registration is needed
- Effective for marking scales, lines and grids
- Provides a great blend detail and toughness
- Perfect for use with our inserts



When identification is critical for traceability or product impact, a quality mark is required. Monode combines creative engineering with a full range of marking solutions to meet your needs. Over a half-century of progress as a trusted "parts marking problem solver" ...that's Monode!



Quality Marking Equipment with Integrated Machine Vision Solutions